

HOTEL **na  
ru**



GALLERY  
HOTEL  
COLLECTION



MGALLERY. STORIES THAT STAY

P5 ~ P6 - Hotel Introduction

P7 ~ P8 - Hotel Art Work

P9 - Floor Guide

# *IN- DEX*

P11 ~ P16 - Rooms and Suites

P17 ~ P20 - Meeting Layout and Capacity

P21 ~ P24 - Restaurants and Bars

P25 ~ P28 - Fitness and Pools

P29 ~ P30 - Location

*Bamseom Suite*  
밤섬 스위트



Lounge & Deck

라운지 & 데크

*Discover your poetic inspiration of contemporary Seoul*

Hotel Naru Seoul – MGallery invites guests to experience an unforgettable harmony of contemporary Korean design and the iconic Han River’s dramatic scenescapes. For generations, artists – from poets to painters – have been drawn to Maponaru, using nature as a source of inspiration and restoration. Today, Hotel Naru is a luxurious ode to the city’s natural beauty and artistic soul, thoughtfully crafted for guests to discover creative inspiration.

# HOTEL — ART SERIES



/ Airy Navigation /

Airy Navigation (2022) is a site-specific installation for the twentieth-floor atrium in Hotel Naru, Seoul. Consisting of eighty blinds in four different colors and resembling an unfurling staircase, the work soars in a diagonal course across the two-story space. The structure of the work, gradually unfolding in concert with the ascending height, draws the viewer's gaze to the water of «Mapo Naru» beyond the glass windows of the hotel lobby. While the wooden ferry boats sailing up and down the Mapo Naru, once a significant site of trade and transportation, are long gone, the term «Naru (river port)» and the dynamic assembly of blinds invite us to recollect the bustling past scenes of the Mapo area.

## CAPTION

Haegye Yang, <Airy Navigation>, 2022, Aluminum blinds, 813x806x406cm.



/ The Present of the Century /

The Present of the Century reinterprets the colorful forms of Classical and Baroque columns using the module-stacking method and vibrant colors. In addition to the joy of viewing art, the work conveys long-established meanings of tower in different traditions and history, and sends a message of love and hope to the viewers. The viewer can easily become an artist by taking commemorative photos, participating or sharing the outcomes. At that moment, the work becomes a monument and creates a vibrance to daily life. Art is not far and high, but close and low. Not just as a mass of giant sculpture, the work is completed as an art by visitors with a desire to remember and relate to the moment forever.

## CAPTION

Jeonghwa Choi, <The Present of the Century>, 2022, F.R.P/Resin, 980x180x180cm.

# FLOOR — GUIDE

FLOOR	FACILITY
23F - 24F	GUEST ROOMS & SUITES
22F	RESTAURANTS & BAR VOISIN
21F	FITNESS RECEPTION
	SAUNA
	FRONT DESK
	MAIN LOBBY
20F	LOUNGE & DECK
	INFINITY POOL & INDOOR SWIMMING POOL
	THE POOL
	FITNESS CENTER
3F - 19F	GUEST ROOMS
	MEETING & EVENT
2F	BUSINESS CENTER
	NURSING ROOM
1F	PUBLIC LIBRARY
	PARKING
	MAPO EIGHT
G Floor	CONCIERGE
	RELAY LOBBY
B4F - B2F	PARKING



Premier River Suite  
프리미어 리버 스위트



HOTEL **na  
ru**

MGALLERY  
HOTEL COLLECTION

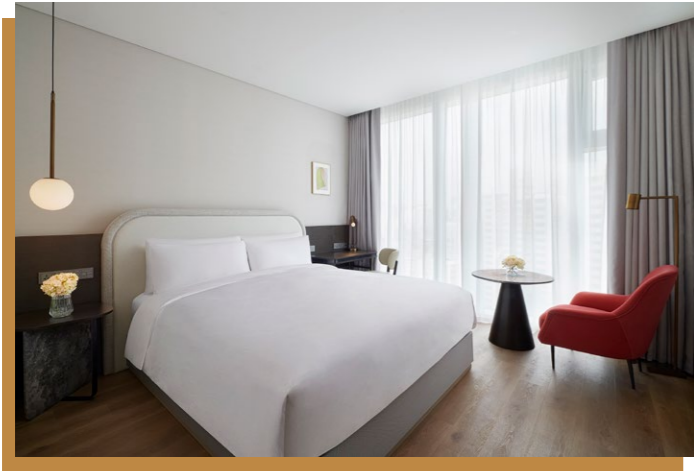
## Rooms and Suites

Peaceful and calm, the hotel's atmosphere seeks to restore an inner feeling of harmony. minimal design with subtle details and colour accents contrasting with white and grey infuses tranquillity while staying in the guestrooms.

12

ROOM TYPE	NUMBER of ROOMS	ROOM SIZE (SQ.M)
Superior	39	29.2
Premier Namsan	5	39.85
Deluxe River King	48	37.43
Deluxe River Twin	22	37.43
Premier River	61	37.43
Family Twin	8	43.46
Namsan Suite	5	50.55
Premier River Suite	6	62.63
Bamseom Suite	1	109.6
Naru Suite	1	186.48

# ROOMS

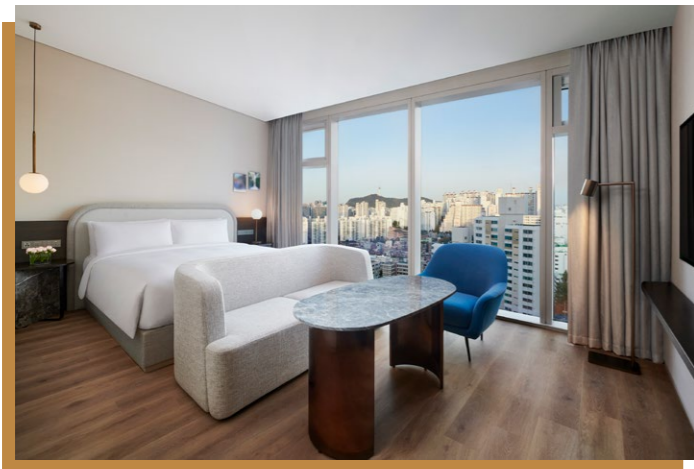


## Superior

Clean lines and neutral tones create a tranquil place to recharge, free from physical and spiritual clutter.

### Features

- City View
- 55-Inch Smart TV
- Nespresso Coffee Machine
- Amenity: Grown Alchemist
- Minibar & Refrigerator
- High-Speed Wired/Wireless Internet

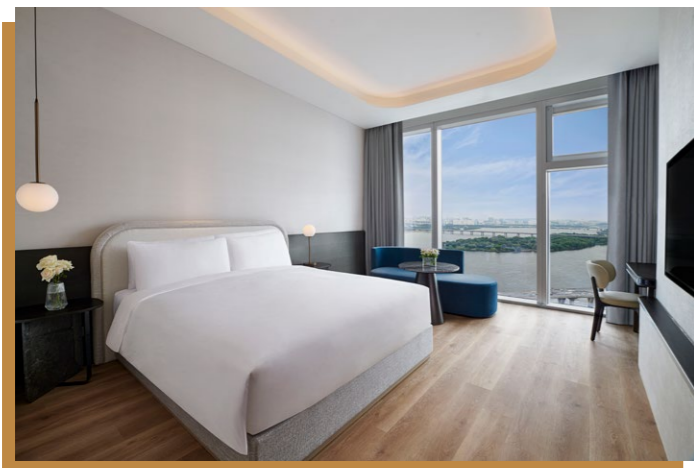


## Premier Namsan

Located on the higher floors of our nature-inspired hotel, these luxury Seoul hotel rooms overlook the dynamic cityscape.

### Features

- Namsan View
- 65-Inch Smart TV
- Nespresso Coffee Machine
- Amenity: Grown Alchemist
- Minibar & Refrigerator
- High-Speed Wired/Wireless Internet
- Iron & Ironing Board

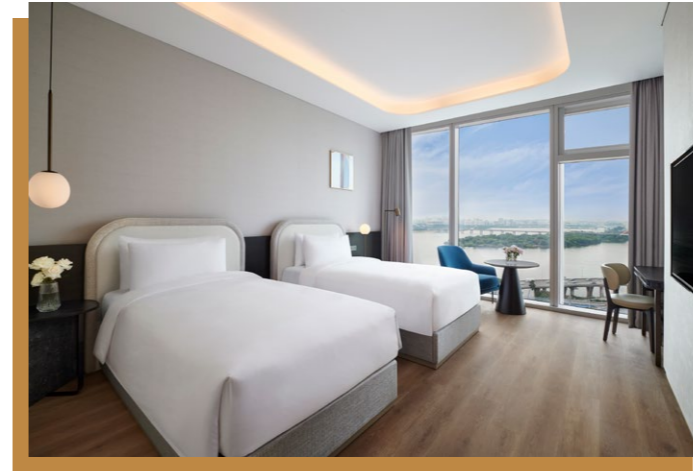


## Deluxe River

Retreat to one of our serene hotel rooms with Han River views in Seoul's Mapo district. A Nespresso coffee machine and a rainfall shower will refresh you.

### Features

- River View
- 55-Inch Smart TV
- Nespresso Coffee Machine
- Amenity: Grown Alchemist
- Minibar & Refrigerator
- High-Speed Wired/Wireless Internet
- Iron & Ironing Board

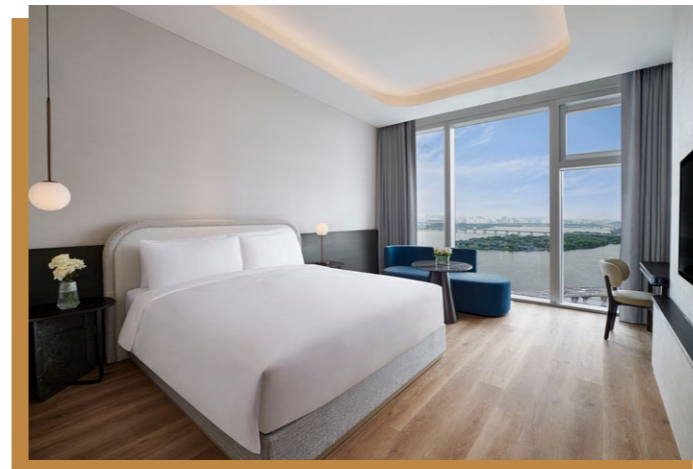


## Deluxe River Twin

Nature is at the heart of the hotel's essence, and you'll feel connected to our singular setting as you gaze at the Han River through floor-to-ceiling windows in this serene space.

### Features

- River View
- 55-Inch Smart TV
- Nespresso Coffee Machine
- Amenity: Grown Alchemist
- Minibar & Refrigerator
- High-Speed Wired/Wireless Internet
- Iron & Ironing Board

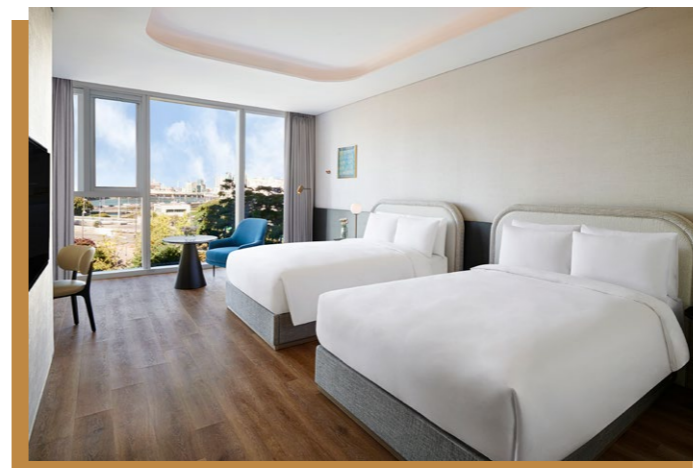


## Premier River

Found on the higher floors of the hotel, the Zen-like Premier River room offers far-reaching views of the Han River for an enthralling cinematic effect.

### Features

- River View
- 55-Inch Smart TV
- Nespresso Coffee Machine
- Amenity: Grown Alchemist
- Minibar & Refrigerator
- High-Speed Wired/Wireless Internet
- Iron & Ironing Board



## Family Twin

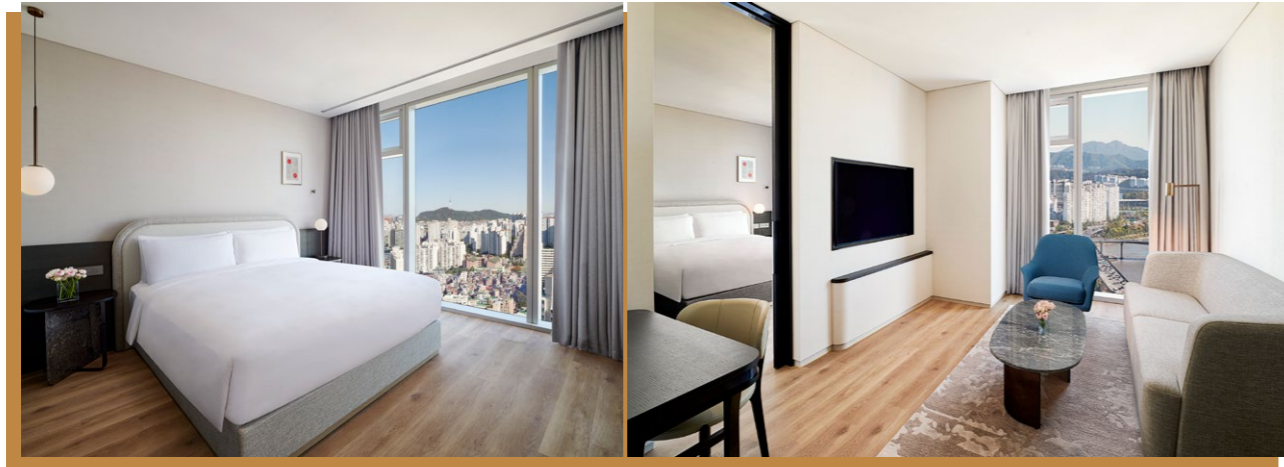
Rooms with two double beds, fridges and safes provide convenience for families visiting Seoul. Sweeping views of the Han River complete the experience.

### Features

- River View
- 55-Inch Smart TV
- Nespresso Coffee Machine
- Amenity: Grown Alchemist
- Minibar & Refrigerator
- High-Speed Wired/Wireless Internet
- Iron & Ironing Board



# SUITES



## Namsan Suite

The curving sofa faces floor-to-ceiling windows in this beautifully designed suite with views of Namsan Tower, a symbol of the city.

### Features

- City View
- 55-Inch Smart TV
- Nespresso Coffee Machine
- Amenity: Grown Alchemist
- Minibar & Refrigerator
- High-Speed Wired/Wireless Internet
- Iron & Ironing Board

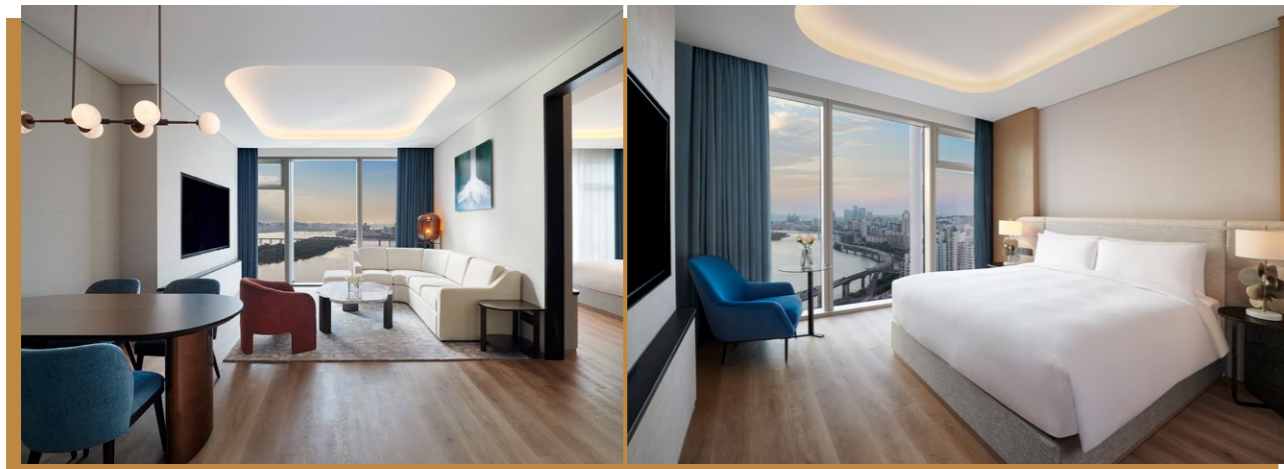


## Bamseom Suite

Choose the Bamseom Suite for views of Namsan Tower and the mesmerizing river. The addition of a private terrace makes this one of the best suites in Seoul.

### Features

- River View
- 55-Inch Smart TV
- Nespresso Coffee Machine
- Amenity: Grown Alchemist
- Terrace
- Minibar & Refrigerator
- High-Speed Wired/Wireless Internet
- Iron & Ironing Board



## Premier River Suite

Let tranquility wash over you as you view the Han River at sunset or in the soft light of dawn. These suites on high floors also feature luxurious sofas.

### Features

- River View
- 55-Inch Smart TV
- Nespresso Coffee Machine
- Amenity: Grown Alchemist
- Minibar & Refrigerator
- High-Speed Wired/Wireless Internet
- Iron & Ironing Board



## Naru Suite

This spacious hotel suite near Yeouido in Seoul includes separate living and dining rooms. A private terrace and river views enhance the experience.

### Features

- River View
- 55-Inch Smart TV
- Nespresso Coffee Machine
- Amenity: Grown Alchemist
- Terrace
- Minibar & Refrigerator
- High-Speed Wired/Wireless Internet
- Iron & Ironing Board

# MEETINGS — EVENTS

Find the ideal Seoul meeting and event venue at our luxury hotel near the Han River. Whether you're planning a conference or a special celebration, our events team will ensure your gathering is flawless. Expansive windows in our meeting rooms let in natural light while framing the signature view. A terrace and a high-tech media wall make the Naru Ballroom a unique choice for an unforgettable occasion.



# LAYOUT —AND CAPACITY



MEMORABLE ARRANGEMENTS



ROOM NAME	SIZE (SQ.M)	SIZE (SQ.FT)	W x D x H (M)	⌘	⊙	⌘
Naru Ballroom 1+2	491.91	5,294.87	28.3 x 16.7 x 4.75	273	250 ~ 280	105
Naru Ballroom 1	263.97	2,841.35	15.7 x 16.7 x 4.75	126	120	36
Naru Ballroom 2	227.94	2,453.53	12.6 x 16.7 x 4.75	126	120	36
Gallery 1+2	112.25	1,208.25	16.0 x 6.5 x 3.0	40	50	60
Gallery 1	58.53	630.01	8.2 x 6.5 x 3.0	25	20	30
Gallery 2	53.72	578.24	7.0 x 6.5 x 3.0	20	20	30
Gallery 3+4	131.62	1,416.75	15 x 7.1 x 3.0	105	80	60
Gallery 3	73.75	793.84	8.0 x 7.1 x 3.0	45	40	30
Gallery 4	57.87	622.91	7.0 x 7.1 x 3.0	45	40	30



### *Restaurants and Bars*

Imaginative food and beverage outlets and interactive service augment the diversity in Seoul's flavour scenes with a bakery café, creative afternoon tea set, conceptual bar and French Bistro. Authentic cuisine with a hint of local tastes, signature cocktail and a selection of fine wines welcomes you to contemporary Seoul. Natural connection with loved ones surrounded by Han River view infuses a captivating moment.

*Restaurant Voisin*

레스토랑 부아쟁

# RESTAURANTS — AND BARS

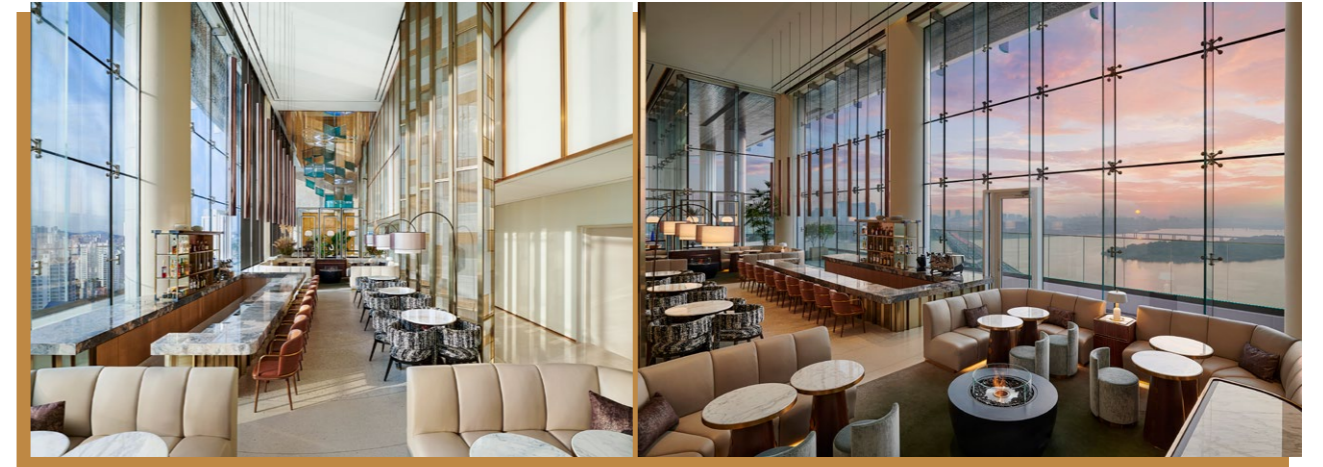


## Restaurant Voisin

Nestled on the 22nd floor of the hotel, the French Bistro is the new home for French cuisine in the city with its signature Han River view. The exquisite dishes are complete with a delicate hint of local flavour, and the interactive service in a refined attitude.

**Opening Hours**  
Breakfast 6:30 AM – 10:00 AM, Lunch 12:00 PM – 2:30 PM  
Dinner 6:00 PM – 10:00 PM

**Seating Capacity**  
146 seats with a Private Dining Room



## Lounge & Deck

Restorative tranquility surrounds you in Lobby Lounge with a calming tea and serene river view. Selected local tea leaf, hand-brewed coffee and elaborate afternoon tea ensure you have a moment to be indulged away from the city's bustling.

**Opening Hours**  
Daytime Lounge 11:00 AM – 6:00 PM  
Afternoon Tea 1:00 PM – 6:00 PM  
Evening Lounge 6:00 PM – 10:00 PM

**Seating Capacity**  
76 seats  
Children are not permitted after 6:00 pm

## LOUNGE & DECK



## Bar Voisin

Unique design inspired by traditional oriental medicine cabinet and distinct concept of cocktails made by the experienced mixologist guide you end the day in style and comfort. Naturally connected with loved ones, friends, or myself, the bar offers the optimal prescription for contemporary Seoulites.

**Opening Hours**  
6:00 PM – 12:00 AM

**Seating Capacity**  
34 seats



## Mapo Eight

From morning to evening, the smell of freshly baked bread fills the spacious café with the aroma of coffee. Full of the selection of hand-baked pastry and fresh salad, sandwiches and detox juice for residents and Han River runners.

**Opening Hours**  
10:00 AM – 8:00 PM

**Seating Capacity**  
67 seats

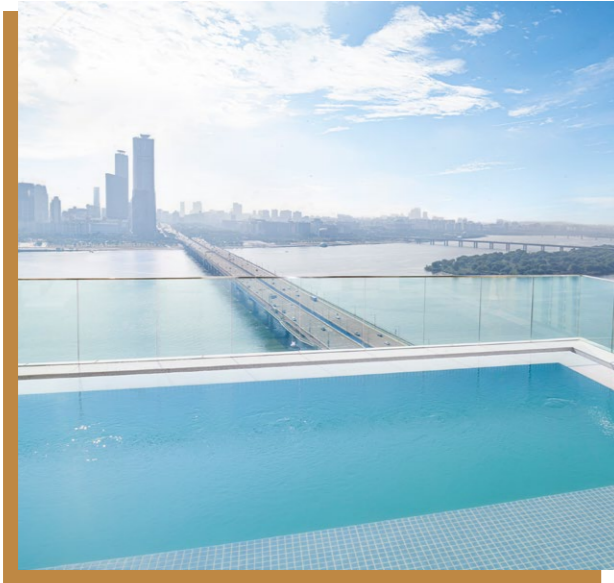


### *Fitness and Pools*

Guests experience locally inspired artwork and natural materials throughout the property, creating a sense of tranquillity for the body and mind. A mix of translucent, transparent, and mirrored materials in the pool area gives the illusion of added volume while amplifying the light to express a harmony of lighting and water. Sustainably built, the hotel offers the natural feeling of meditative and proper healing ties in swimming pools, fitness centre and sauna.



# FITNESS — AND POOLS



## *Infinity Pool*

The infinity pool offers dramatic views of the River Han and the city's renowned skyline - this moment in the infinity pool becomes a memorable experience itself.

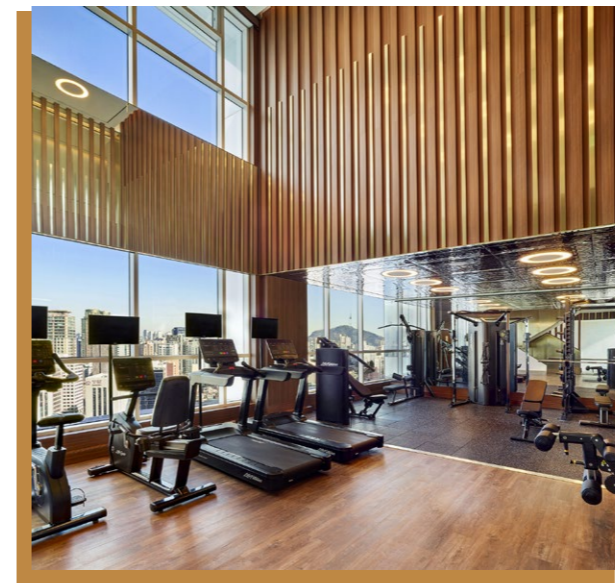
---

### Opening Hours

7:00 AM – 10:00 PM

\*Break Time 11:00 AM – 12:00 PM

\*Closed on the first Tuesday of every month.



## *Fitness Center*

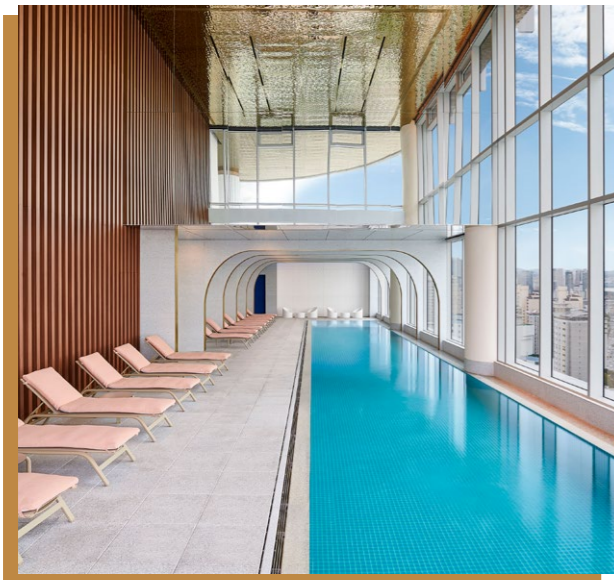
High technology gym equipment and natural interior help continue your daily routine even while away from home.

---

### Opening Hours

6:00 AM – 10:00 PM

\*Closed on the first Tuesday of every month.



## *Indoor Swimming Pool*

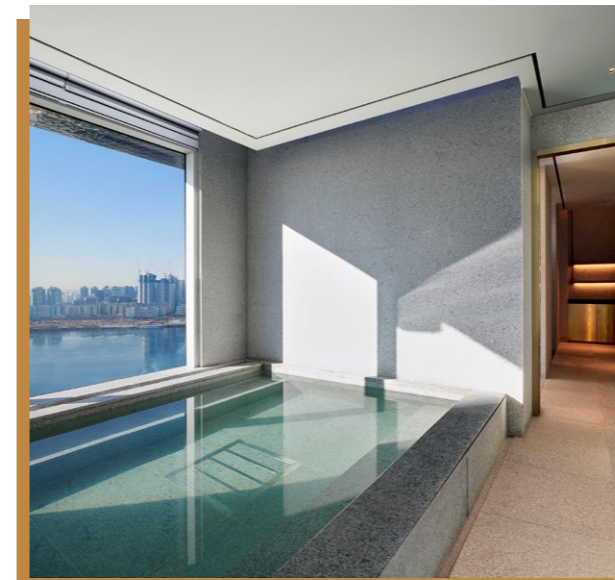
The 25-meter indoor swimming pool reflects the calming effect of water ripples. Textured walls and sunshine amplify the reflection of simmering water, showcasing the dance of light and shadow.

---

### Opening Hours

6:00 AM – 10:00 PM

\*Closed on the first Tuesday of every month.



## *Sauna*

Water inspired design in an intimate atmosphere enhances restorative tranquillity. Making 'me time' is easy here in Hotel Naru Seoul – MGallery.

---

### Opening Hours

6:00 AM – 10:00 PM

\*Closed on the first Tuesday of every month.

Hotel Naru Seoul - MGallery

호텔 나루 서울 - 엠갤러리

HOTEL **naru**

MGALLERY  
HOTEL COLLECTION



### Destination

Hotel Naru is named after the old name for the location, Maponaru. Due to its strategic location on the northern bank of the Han River, Maponaru has been a centre for transportation, trading and commerce since the late Chosun dynasty. Today, Mapo continues its central roles of commerce and transportation close to Incheon International Airport

and the city's central business district. Home to universities, government buildings, high-rise office towers, cultural sites, beautiful green parks and local restaurants and bars, Mapo District is a perfect location to explore Seoul.

HOTEL NARU SEOUL - MGALLERY  
서울특별시 마포구 마포대로 8



[mgallery.com](http://mgallery.com) - [all.accor.com](http://all.accor.com)  
[instagram.com/mgalleryhotels](https://www.instagram.com/mgalleryhotels)



8 Mapo-daero, Mapo-gu, Seoul 04176  
hotelnaruseoul.com

